

MANIFOLDS

MANIFOLDS allow to connect in parallel more cylinders, or cylinders bundles of the same gas upstream the first stage reducer.

Each cylinder seat is equipped with a non-return device that assures to work in total safety.

Manifolds are available in 1 to 5 cylinders seats.

If it is necessary to connect more than 5 cylinders (or cylinder bundles) it will be possible to install more manifolds connecting them to each other with gas specific pigtails.

The connection between cylinder and manifold and between main panel board and manifold must be realized by means of connecting devices (pigtails) specific for the treated gas according with norms ISO EN 21969 and ISO EN 7396.



The input threads meet the UNI/ISO requirements and depend on the gas.



COMPLEMENTARY EQUIPMENTS:

High pressure relief valve
(one for each manifold or bank of manifolds).

CODE	DESCRIPTION
RAMP - 0001	1 seat manifold – O ₂
RAMP - 0002	2 seats manifold – O ₂
RAMP - 0003	3 seats manifold – O ₂
RAMP - 0005	5 seats manifold – O ₂
201004204	High pressure relief valve – O ₂

TECHNICAL FEATURES:

Copper hose

Working pressure: 250 bar

Valves body: CW614N

Non-return device and shutter

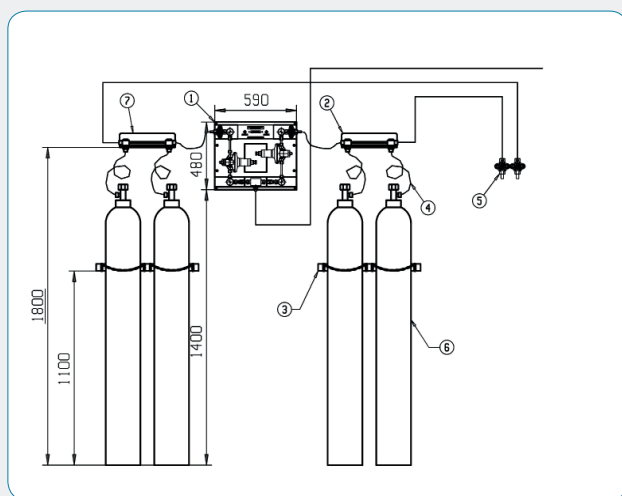
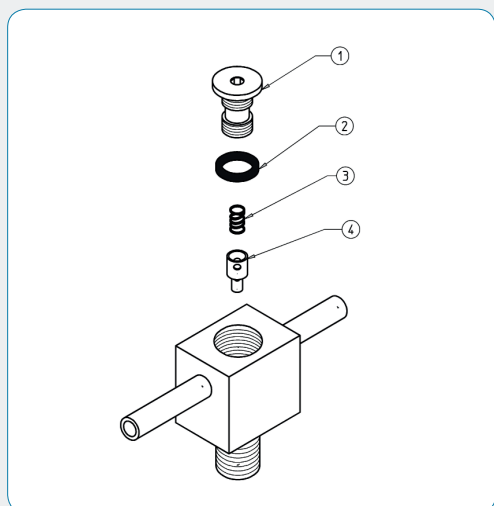
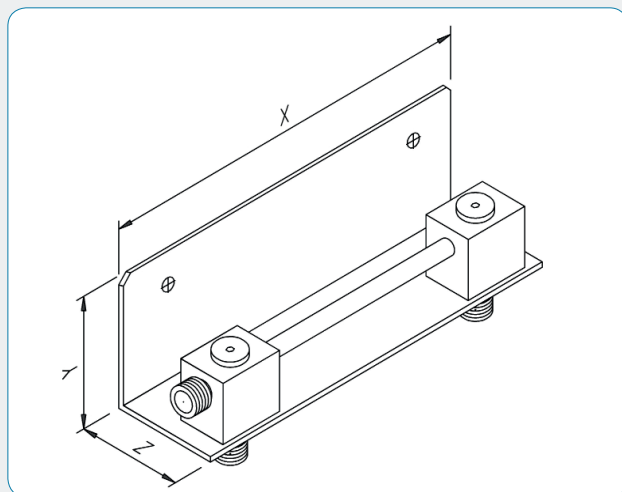
Input connector complying to norm

UNI/ISO depending on the type of gas

Other threads are available upon request.

CODE	DESCRIPTION
RAMP - 0006	1 seat manifold – N ₂ O
RAMP - 0007	2 seats manifold – N ₂ O
RAMP - 0008	3 seats manifold – N ₂ O
RAMP - 0010	5 seats manifold – N ₂ O
20104204	High pressure relief valve – N ₂ O

CODE	DESCRIPTION
RAMP - 0011	1 seat manifold – AIR
RAMP - 0012	2 seats manifold – AIR
RAMP - 0013	3 seats manifold – AIR
RAMP - 0015	5 seats manifold – AIR
20204204	High pressure relief valve – AIR



CODE	DESCRIPTION
RAMP - 0016	1 seat manifold – CO2
RAMP - 0017	2 seats manifold – CO2
RAMP - 0018	3 seats manifold – CO2
RAMP - 0020	5 seats manifold – CO2
20504204	High pressure relief valve – CO2

CODE	DESCRIPTION
RAMP - 0021	1 seat manifold – N2
RAMP - 0022	2 seats manifold – N2
RAMP - 0023	3 seats manifold – N2
RAMP - 0025	5 seats manifold – N2
20304204	High pressure relief valve – N2

DIMENSION			
1 seat manifold	X = 137	Y = 80	Z = 65
2 seats manifold	X = 195	Y = 80	Z = 65
3 seats manifold	X = 320	Y = 80	Z = 65
5 seats manifold	X = 570	Y = 80	Z = 65

NA	CODE	DESCRIPTION	Q.TY
1	20001024	Manifolds shutter cap	1
2	20001025	O-ring or 2075 viton for manifolds O2 – AIR – N2	1
2	20001043	O-ring or 2075 nbr for manifolds CO2 – N2O	1
3	23101223	Shutter spring	1
4	20001026	Manifolds shutter O2 – AC – N2	1
4	20001046	Manifolds shutter CO2	1
4	20001059	Manifolds shutter N2O	1

- 1) FIRST STAGE CENTRAL UNIT WITH AUTOMATIC SWITCH-OVER DEVICE
- 2) RESERVE MANIFOLD
- 3) RACK
- 4) PIGTAIL
- 5) SCAVENGING VALVE
- 6) MEDICAL GAS CYLINDER
- 7) SERVICE MANIFOLD