

## AFNOR TERMINAL UNITS

The AFNOR terminal units are conceived and realized according with the Directive 93/42/EEC and related norms ISO 7396-1, EN 9170-1, EN 737-1, EN 737-3.

The terminal units can be mounted either in flush mounting box or in surface mounting box or in electromedical devices such as bed-head units and ceiling pendants.


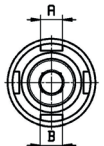
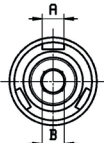





### AFNOR TERMINAL UNITS FOR MEDICAL GASES AND VACUUM

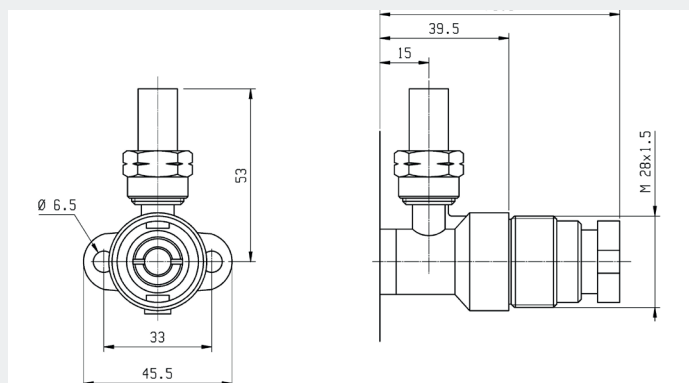
They are constituted by:

- Nickel-plated terminal unit gas specific head realized according with the norms EN 9170 and AFNOR NFS 90-116 fit for being mounted on a base-block according with the norm UNI 9507
  - Brass base-block with thread according with norm UNI 9507
- The base-block for medical gas terminal unit is supplied complete with maintenance valve with brass piston type shutter.
- Nut and brass fitting to be welded.

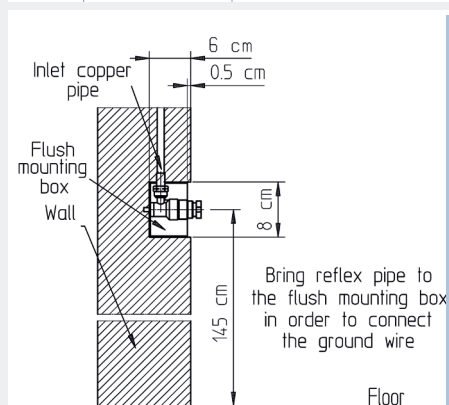
CODE	DESCRIPTION
UTA - 0014	Terminal unit head AFNOR NFS 90 – 116 for oxygen
UTA - 0019	Terminal unit head AFNOR NFS 90 – 116 for nitrous oxide
UTA - 0005	Terminal unit head AFNOR NFS 90 – 116 for medical air
UTA - 0009	Terminal unit head AFNOR NFS 90 – 116 for vacuum
UTA - 0025	Terminal unit head AFNOR NFS 90 – 116 for carbon dioxide
UTA - 0030	Terminal unit head AFNOR NFS 90 – 116 for nitrogen
UTU - 0034	UNI 9507 base-block with pipe connection for oxygen
UTU - 0035	UNI 9507 base-block with pipe connection for Nitrous Oxide
UTU - 0031	UNI 9507 base-block with pipe connection for Medical Air
UTU - 0033	UNI 9507 base-block with pipe connection for vacuum
UTU - 0036	UNI 9507 base-block with pipe connection for carbon dioxide
UTU - 0037	UNI 9507 base-block with pipe connection for Nitrogen

	GAS	VACUUM
	A	Ø 7
	B	Ø 8,1
	GROOVES N°	2
	GAS	NITROUS OXIDE
	A	Ø 7
	B	Ø 7,1
	GROOVES N°	4
	GAS	OXYGEN
	A	Ø 7
	B	Ø 8,1
	GROOVES N°	3

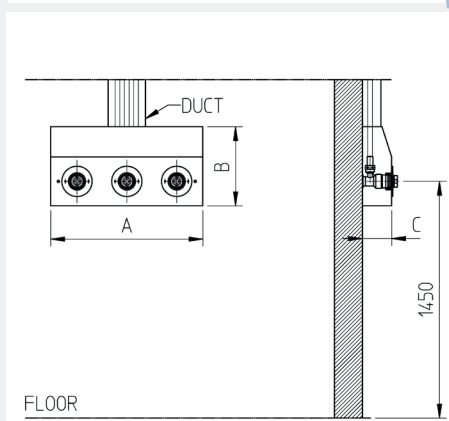
	GAS	MEDICAL AIR
	A	Ø 8
	B	Ø 7,1
	GROOVES N°	2
	GAS	CARBON DIOXIDE
	A	Ø 5
	B	Ø 7,1
	GROOVES N°	5
	GAS	NITROGEN
	A	Ø 5,5
	B	Ø 7,1
	GROOVES N°	4



WORKING PRESSURE	WEIGHT
4 o 8 (N <sub>2</sub> ) ±1 bar	Kg. 0,290



## FLUSH MOUNT



## SURFACE MOUNT



	1 SEAT	2 SEATS	3 SEATS	4 SEATS	5 SEATS	6 SEATS
A	115	220	327	434	541	648
B	170	170	170	170	170	170
C	63	63	63	63	63	63

