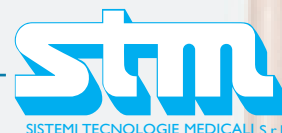


## BS 5682 TERMINAL UNITS FOR MEDICAL GASES AND VACUUM

The BS 5682 terminal units are conceived and realized according with the Directive 93/42/EEC and related norms ISO 7396 – I, EN 9170 – I, EN 737-1, EN 737-3.

The terminal units can be lodged in flush mounting box, in surface mounting box or in electromedical systems such as bed- head units and ceiling pendants.



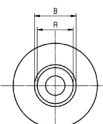
### BS 5682 TERMINAL UNITS FOR MEDICAL GASES AND VACUUM

They are composed by:

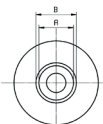
- Brass base-block with thread according with norm EN 9170 – I.  
The base-block is supplied complete with maintenance valve with shutter.
- Gas specific nickel plated brass terminal unit realized according with the norm BS 5682 with probe releasing gas coded plastic nut
- Welding pipe diam. mm 10

| CODICE      | DESCRIZIONE                              |
|-------------|--|
| UTBS - 0001 | Terminal unit BS 5682 for air 400        |
| UTBS - 0002 | Terminal unit BS 5682 for vacuum         |
| UTBS - 0003 | Terminal unit BS 5682 for oxygen         |
| UTBS - 0004 | Terminal unit BS 5682 for nitrous oxide  |
| UTBS - 0006 | Terminal unit BS 5682 for carbon dioxide |
| 23702018    | Base block BS/DIN air 400                |
| 23702019    | Base block BS/DIN vacuum                 |
| 23702016    | Base block BS/DIN oxygen                 |
| 23702017    | Base block BS/DIN nitrous oxide          |
| 23702020    | Base block BS/DIN air 700                |

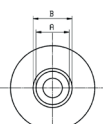
# BS 5682 TERMINAL UNITS FOR MEDICAL GASES AND VACUUM

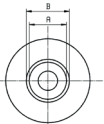
|  | GAS | VACUUM  |
|--|-----|---------|
|  | A   | Ø 21,29 |
|  | B   | Ø 24,76 |

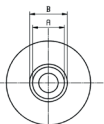
|  | GAS | NITROUS OXIDE |
|---|-----|---------------|
|   | A   | Ø 20,47       |
|   | B   | Ø 23,95       |

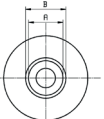
|  | GAS | OXYGEN  |
|---|-----|---------|
|   | A   | Ø 17,30 |
|   | B   | Ø 20,77 |

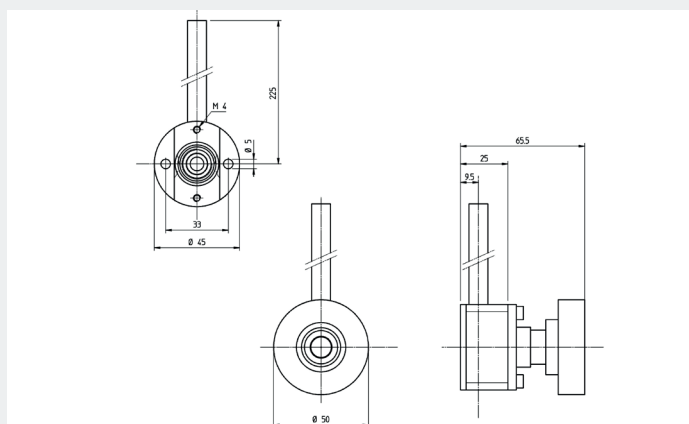
|  | GAS | MEDICAL AIR 400 |
|---|-----|-----------------|
|   | A   | Ø 22,06         |
|   | B   | Ø 25,55         |

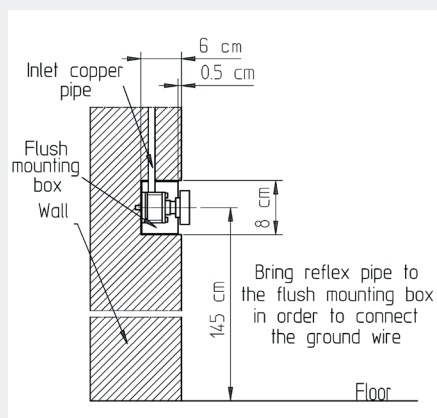
|  | GAS | MEDICAL AIR 700 |
|--|-----|-----------------|
|  | A   | Ø 18,90         |
|  | B   | Ø 22,38         |

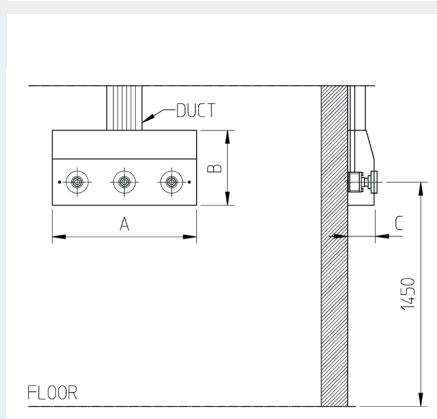
|  | GAS | OXYGEN/NITROUS OXIDE |
|--|-----|----------------------|
|  | A   | Ø 19,69              |
|  | B   | Ø 23,19              |



| WORKING PRESSURE | WEIGHT    |
|------------------|-----------|
| 4 or 7 ± 1 bar   | Kg. 0,220 |



## FLUSH MOUNT



## SURFACE MOUNT



|   | 1 SEAT | 2 SEATS | 3 SEATS | 4 SEATS | 5 SEATS | 6 SEATS |
|---|--------|---------|---------|---------|---------|---------|
| A | 115    | 220     | 327     | 434     | 541     | 648     |
| B | 170    | 170     | 170     | 170     | 170     | 170     |
| C | 63     | 63      | 63      | 63      | 63      | 63      |

