

UNI 9507 TERMINAL UNITS

The UNI 9507 terminal units are conceived and realized according with the Directive 93/42/EEC and related norms ISO 7396-1, EN 9170-1, EN 737-1, EN 737-3.

The terminal units can be mounted either in flush mounting box or in surface mounting box or in electromedical devices such as bed-head units and ceiling pendants.



UNI 9507 TERMINAL UNITS FOR MEDICAL GASES AND VACUUM

They are constituted by:

- Brass base-block with thread according with norms EN 9170 – I and UNI 9507.
The base-block is supplied complete with maintenance valve with brass piston type shutter.
- Gas specific nickel plated brass terminal unit realized according with the norm UNI 9507 with probe releasing gas coded plastic nut.
- Nut and brass fitting to be welded.

CODE	DESCRIPTION
UTU - 0015	Terminal unit head UNI 9507 for Oxygen
UTU - 0019	Terminal unit head UNI 9507 for Nitrous Oxide
UTU - 0004	Terminal unit head UNI 9507 for Medical Air
UTU - 0011	Terminal unit head UNI 9507 for Vacuum
UTU - 0023	Terminal unit head UNI 9507 for Carbon Dioxide
UTU - 0030	Terminal unit head UNI 9507 for Nitrogen
UTU - 0008	Terminal unit head UNI 9507 for Air for Tools
UTU - 0034	UNI 9507 base-block with pipe connection for Oxygen
UTU - 0035	UNI 9507 base-block with pipe connection for Nitrous Oxide
UTU - 0031	UNI 9507 base-block with pipe connection for Medical Air
UTU - 0033	UNI 9507 base-block with pipe connection for Vacuum
UTU - 0036	UNI 9507 base-block with pipe connection for Carbon Dioxide
UTU - 0037	UNI 9507 base-block with pipe connection for Nitrogen
UTU - 0032	UNI 9507 base-block with pipe connection for Air for surgical Tools

	GAS		VACUUM	
	A		Ø 15	
	B		Ø 17	
	C		Ø 23	

	GAS		NITROUS OXIDE	
	A		Ø 9	
	B		Ø 11	
	C		Ø 14	

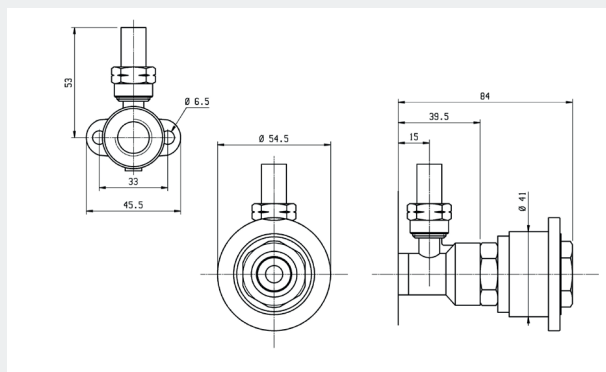
	GAS		OXYGEN	
	A		Ø 16	
	B		Ø 17	
	C		Ø 22	

	GAS		MEDICAL AIR	
	A		Ø 14	
	B		Ø 18	
	C		Ø 25	

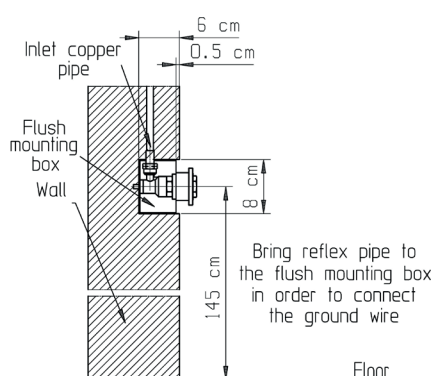
	GAS		INSTRUMENTAL AIR	
	A		Ø 12	
	B		Ø 18	
	C		Ø 28	

	GAS		CARBON DIOXIDE	
	A		Ø 13	
	B		Ø 17	
	C		Ø 27	

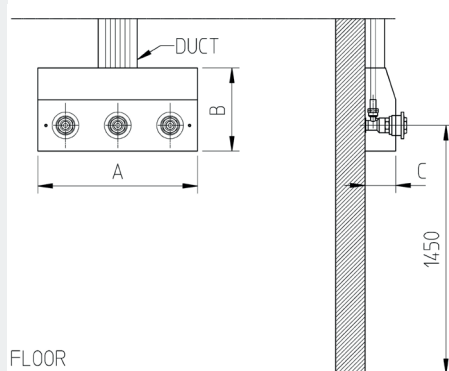
	GAS		NITROGEN	
	A		Ø 13	
	B		Ø 18	
	C		Ø 26	



WORKING PRESSURE	WEIGHT
4 or 8 ± 1 bar	Kg. 0,290



FLUSH MOUNT



SURFACE MOUNT



	1 SEAT	2 SEATS	3 SEATS	4 SEATS	5 SEATS	6 SEATS
A	115	220	327	434	541	648
B	170	170	170	170	170	170
C	63	63	63	63	63	63

