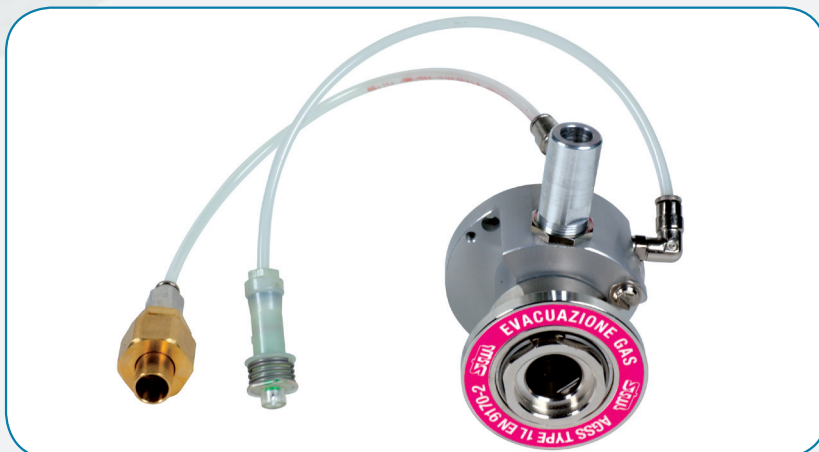
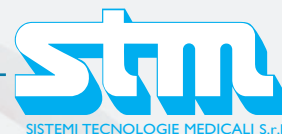


AGSS TERMINAL UNITS FOR ANAESTHETICS GAS SCAVENGING SYSTEM - VENTURI type

AGSS TYPE I L terminal units have been conceived and realized according with the Directive 93/42/ EEC and related norms ISO 7396-2, EN 9170-2, EN 737-2.

AGSS TYPE I L terminal units can be mounted either in flush mounting boxes or in surface mounting boxes or in electro-medical devices such as bed-head units and ceiling pendants.



AGSS TYPE I L TERMINAL UNITS FOR ANAESTHETICS GAS SCAVENGING SYSTEM

They are constituted by:

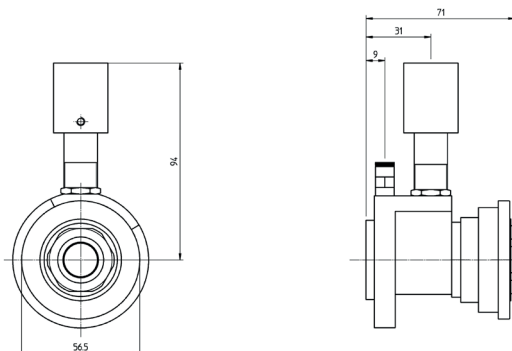
- Base-block, gas specific, to be connected to related AGSS network
- Gas specific nickel-plated brass terminal unit complying with norm ISO 7396 – 2 EN 9170-2 with identification label
- Aluminium fixation support
- On – off pneumatic switch
- Flow adjusting screw for network calibration

They need:

5 bar compressed air supply

CODE	DESCRIPTION
UTEA - 0002	AGSS TYPE I L terminal units for Anaesthetics gas scavenging complete of on-off switch
23302101	Painted stainless steel surface mounting box for AGSS terminal unit
23302100	Satin finish stainless steel flush mounting box for AGSS terminal unit



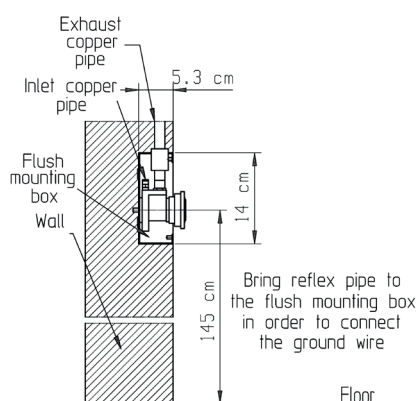


WORKING PRESSURE

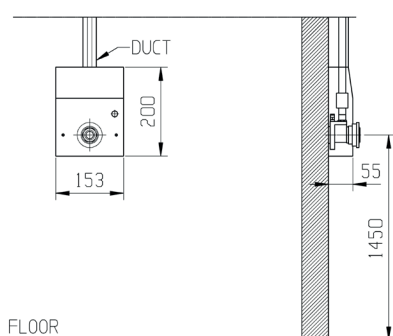
-150 m bar (max)

WEIGHT

Kg. 0,530



FLUSH MOUNT



SURFACE MOUNT



	1 SEAT	2 SEATS	3 SEATS	4 SEATS	5 SEATS	6 SEATS
A	115	220	327	434	541	648
B	170	170	170	170	170	170
C	63	63	63	63	63	63